

## CASE STUDY

# WOLF CREEK ROAD

Roadway Shoulder Stabilization  
Eugene, OR

## PROJECT SUMMARY

Several areas along Wolf Creek Road in Lane County, OR required stabilization and erosion protection due to roadway shoulder failures. The contractor originally used gabion baskets on one section of the road, but decided to try SCOURLOK® because it offers robust slope stabilization, but installs faster than other armoring options.

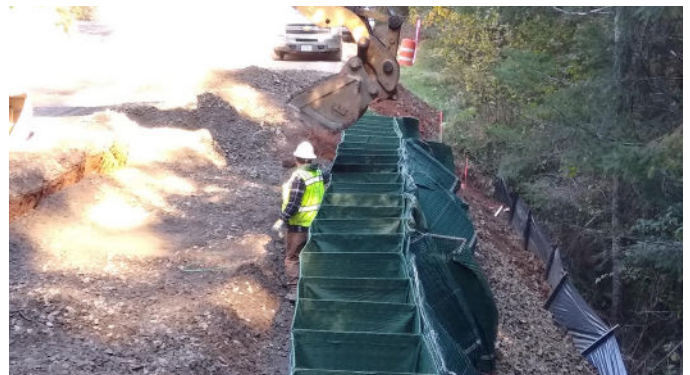
SCOURLOK combines superior erosion control protection from PYRAMAT® 75 high performance turf reinforcement mat (HPTRM) with the exceptional hydraulic and soil retention properties of GEOTEX® Nonwovens. The system features metal units that are filled with soil or other fill materials and can easily be connected and contoured to accommodate projects of any size.

In just two hours, two people fully installed 75 feet of SCOURLOK. In comparison, it took six people two hours to install only 15 feet of gabions. Another benefit to using the SCOURLOK system was that a mixture of soil and rock leftover from the roadway shoulder reconstruction was used to fill the SCOURLOK units. This material could not be used to reconstruct the roadway subgrade and shoulder. The ability to reuse this material saved the cost and time of hauling and disposing of it offsite. Additionally, the SCOURLOK units allowed for the installation of a guardrail system.



## PROBLEM

Wolf Creek Road required stabilization and protection due to roadway shoulder failures



## SOLUTION

SCOURLOK was rapidly deployed saving time and installation costs by using on-site materials and eliminating the disposal of off-site waste



**SCOURLOK**™  
Engineered Bank Stabilization

[PropexGlobal.com/Scourlok](http://PropexGlobal.com/Scourlok)

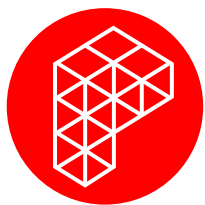
## FEATURES & BENEFITS

- Resists extreme hydraulic stresses, protecting vegetated and un-vegetated applications
- Units can easily be connected and contoured to accommodate projects of any size
- Units can be filled with in-situ soils, eliminating the cost of importing fill material to a jobsite
- Compact design makes shipping costs more effective than traditional hard armoring solutions
- Units ship pre-assembled for fast and easy installation, reducing overall installation costs
- Units are deployed faster than conventional methods and can be filled using machinery



## PERFORMANCE

In just two hours, two people fully installed 75 feet of SCOURLOK to re-stabilize the roadway shoulder and slope. In comparison, it took six people two hours to install only 15 feet of gabions.



**Propex**<sup>®</sup>  
GEOSOLUTIONS

## INNOVATION TO BUILD ON™

Visit our website for more information, Product Samples, or other inquiries, or call Customer Service at 800 624 1273

PO Box 19269  
4019 Industry Drive  
Chattanooga, TN 34716

p: 800 621 1273  
f: 423 899 5005  
PropexGlobal.com

PGS-1638E-001 (03/2020)